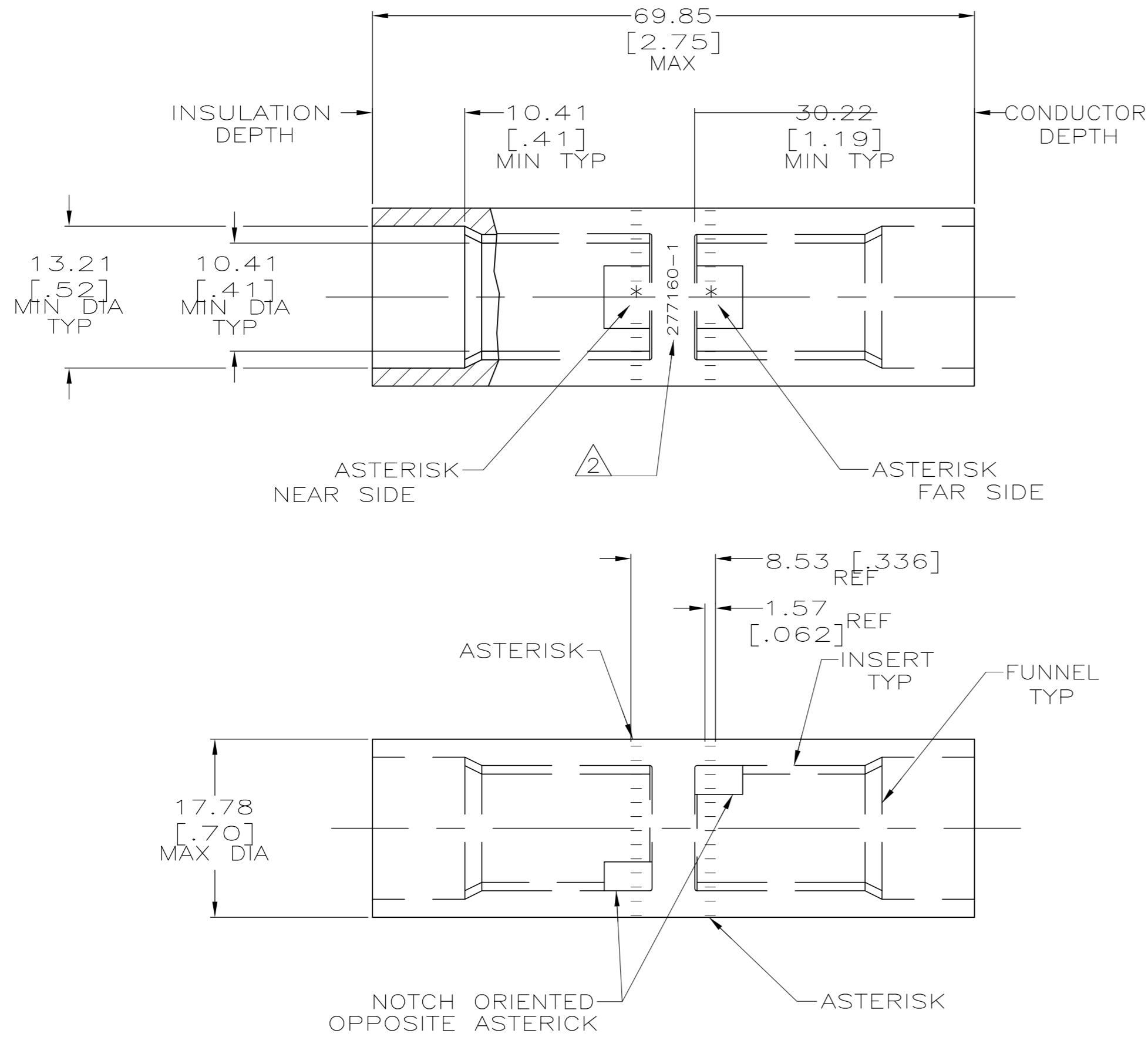


THIS DRAWING IS UNPUBLISHED. RELEASED FOR PUBLICATION
 © COPYRIGHT BY TYCO ELECTRONICS CORPORATION. ALL RIGHTS RESERVED.

LOC	DIST	REVISIONS			
P	LTR	DESCRIPTION	DATE	DWN	APVD
G	86	M	REV PER ECR 08-004875	26FEB08	JR MS

1 WIRE INSULATION: 10.79[.425] - 11.94[.470] DIA
 2 STAMP " 277160-1 AMP 1/0 AL - 2CU"
 APPROX AS SHOWN



SPLICE: COPPER ASTM B-187 TIN PL ASTM B 545 0.00381[.000150] MIN THK INSERT & FUNNEL: BRASS ASTM B36 NICKEL PL SAE AMS QQ-N-290A, DATED JULY 2000, 0.00254 [.000100] MIN THK	277160-1
MATERIAL & FINISH	PART NO.

THIS DRAWING IS A CONTROLLED DOCUMENT.		DWN DK SCHRUM 7/5/89	Tyco Electronics Corporation Harrisburg, PA 17105-3608	
CR RHOADS: MM [INCHES]		CHK MS FEHER 5/1/90	NAME	
TOLERANCES UNLESS OTHERWISE SPECIFIED:		APVD CR RHOADS 2/24/92	PRODUCT SPEC	
0 PLC ± -		108-11011		WIRE SPLICE, BUTT, SEALED COPALUM, 55.5mm2 [1/0] ALUMINUM 34.3mm2 [2] COPPER
1 PLC ± -		APPLICATION SPEC		
2 PLC ± -		114-2134		SIZE
3 PLC ± -		76.0 GRAMS		CAGE CODE
4 PLC ± -		CUSTOMER DRAWING		DRAWING NO
FINISH SEE TABLE		SCALE 2:1		RESTRICTED TO
		SHEET 1 of 1		REV M